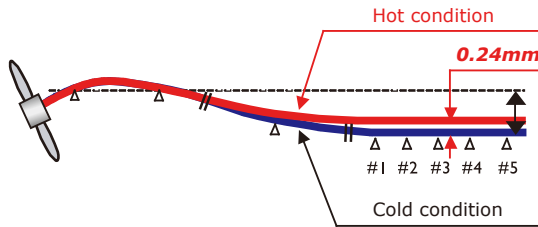


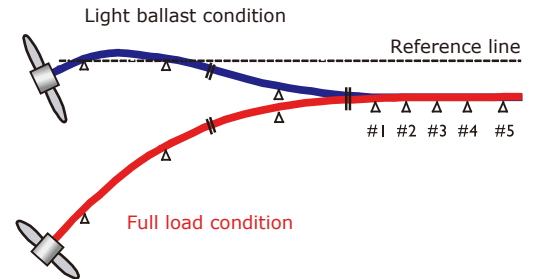
Causes for engine bearing failures

There have been a growing number of incidents of engine bearing damage reported in recent large two-stroke cycle main engines. Among the various cases of bearing damage reported, there have been several cases in which engine bearings have become unloaded due to the effects of changes in temperature and hull deflection.

Temperature Changes



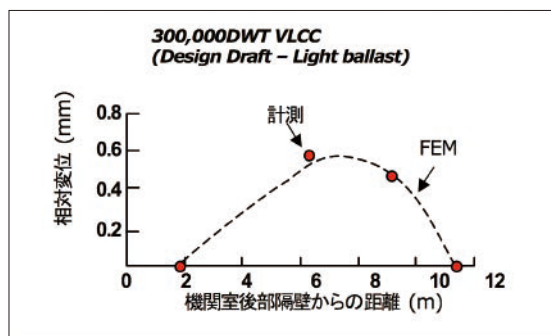
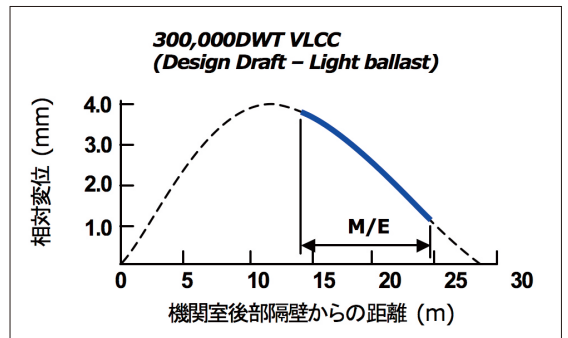
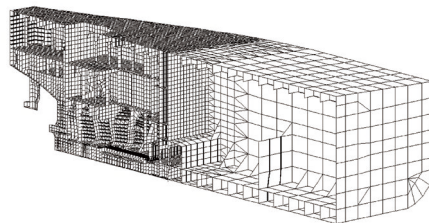
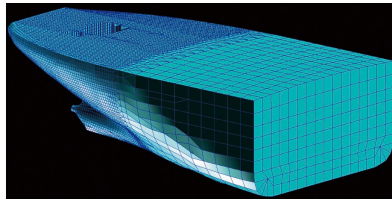
Hull Deflection



Validation by analysis and testing

The accuracy of these guidelines has been validated by both Finite Element Analysis and full-scale measurements.

Finite Element Analysis



Measurement of Hull Deflection

