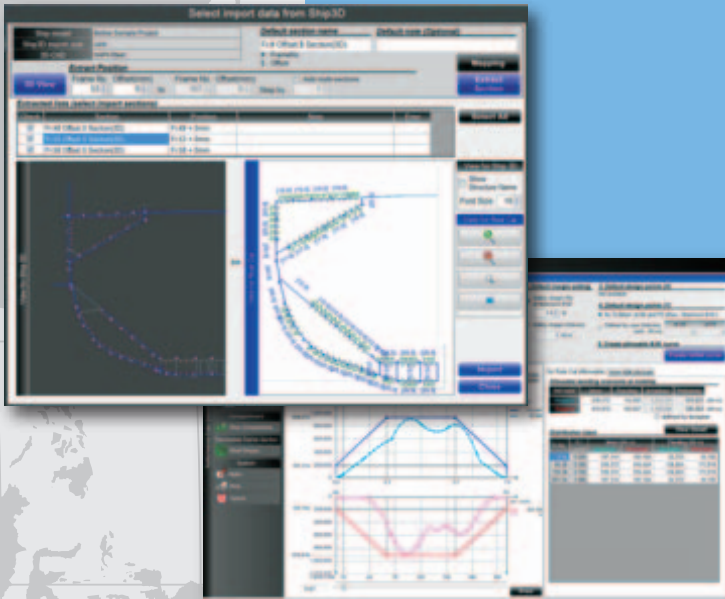


# CAD Interface

Interface Program for Data Linkage between 2D/3D CAD and Rule Calculation System

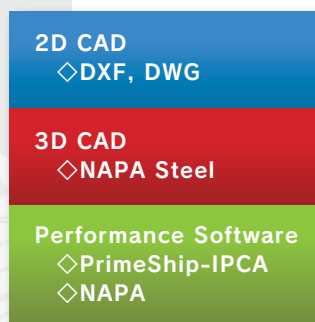


## Key Features

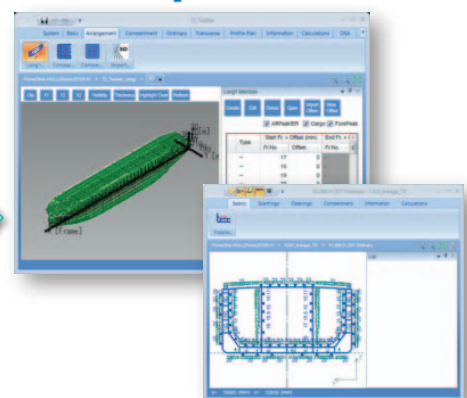
- ◆ Effective use of CAD and performance data
- ◆ Reduces data creation time and helps prevent input errors
- ◆ Strong support for ship design work

PrimeShip-CAD Interface covers all of the information needed to perform the rule calculation of the current and harmonised CSR (Common Structural Rules) such as hull cross-sectional shapes, scantling and compartment data, longitudinal strength calculation results, etc. It effectively reduces data creation time and helps prevent input errors.

## Overview of data linkage



## PrimeShip-HULL



※ Data linkage performed using PrimeShip-CAD XML Schema Group.



PrimeShip-CAD XML Schema Group is a data structure file in XML format that has been developed in order to realize data linkage between the rule calculation software that ClassNK provides and commercial hull 2D/3D CAD or ship performance calculation software. The versatility of XML makes it possible to data-link among the various systems and it is widely used by numerous organizations and individuals.



## Components

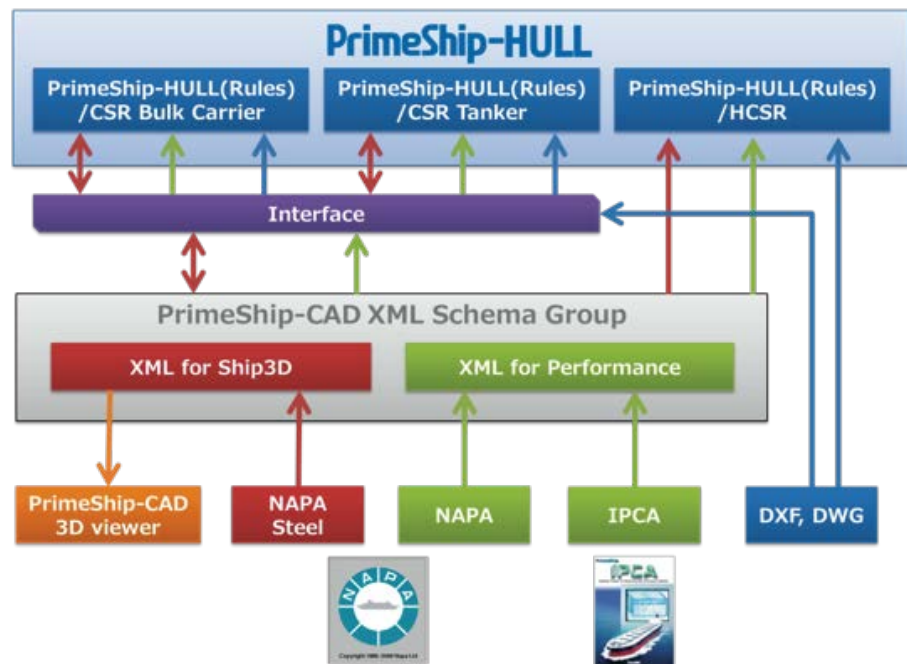
PrimeShip-CAD Interface is comprised of the following interface programs:

3D CAD Interface
<ul style="list-style-type: none"> <li>◇ <b>NAPA Steel XML Interface*</b> Interface program for performing data linkage between NAPA Steel and XML Schema for Ship3D</li> </ul>
Performance Interface
<ul style="list-style-type: none"> <li>◇ <b>IPCA Interface for PrimeShip-CAD*</b></li> <li>◇ <b>NAPA XML Interface*</b> Interface program to generate XML Schema for Performance from performance calculation software</li> </ul>
Rule Calculation Interface
<ul style="list-style-type: none"> <li>◇ <b>PrimeShip-CAD Interface for CSR Rules</b> Able to generate data files for the rule calculation software from both XML files and 2D CAD data in DXF or DWG format</li> </ul>
Ship 3D Viewer
<ul style="list-style-type: none"> <li>◇ <b>PrimeShip-CAD 3D Viewer</b> Able to read XML files in "XML Schema for Ship3D" format and display them in 3D.</li> </ul>

※Implemented as a standard feature of the software



## Overall Structure of Data Linkage



※Requires an environment where each piece of software used during data linkage is properly installed and operating.

Contact address : Hull Rules Development Department  
ClassNK Administration Center Annex

3-3 Kioi-cho, Chiyoda-ku, Tokyo 102-0094, Japan  
E-mail: dhd@classnk.or.jp Tel: +81-3-5226-2180 Fax: +81-3-5226-2172