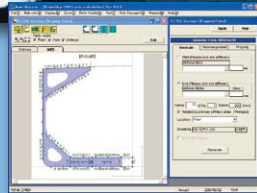
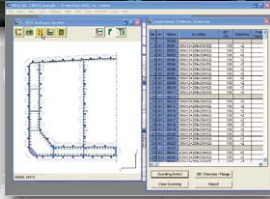


# HULL (Rules)

Rule Calculation System



## Key Features

- ◆ Rule compliance checks in accordance with the IACS CSR and Part C of the ClassNK Rules,
- ◆ Supports efficient ship structure design
- ◆ Quick calculations for strength members,
- ◆ User friendly interface,
- ◆ Create reports in NK required formats,
- ◆ Free to use

PrimeShip-HULL(Rules) is a rule calculation software suite for hull structures with a polished user interface. This free software allows ship designers to quickly calculate the requirements for structural members in accordance with the IACS-CSR and Part C of the ClassNK Rules.

## Full support for structural design

Based on abundant experience ClassNK has accrued through more than a century of drawing approval, PrimeShip-HULL(Rules) is more than just a mere rule checking tool. It is a support system for designing ship structures. PrimeShip-HULL(Rules) boasts a number of special features to make the design process more efficient, including a user friendly interface, quick rule calculation, easy-to-understand calculation results, and transparent reports for scantling calculations. PrimeShip-HULL(Rules) has been upgraded with enhanced optimization functions and is now usable for a wider range of ship types.

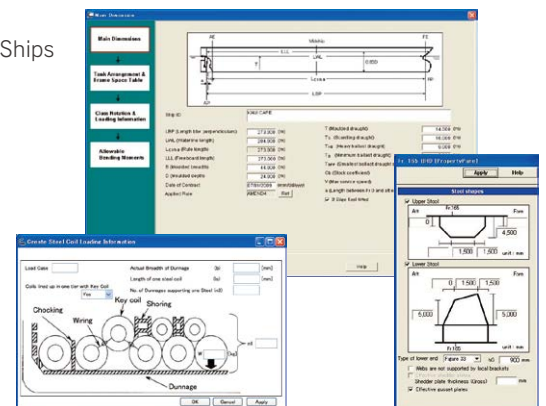
## Composition of PrimeShip-HULL(Rules)

PrimeShip-HULL(Rules) is comprised of three specialized software programs designed for specific rule sets.

- PrimeShip-HULL(Rules)/NK Rule  
NK Rules for the Survey and Construction of Steel Ships
- PrimeShip-HULL(Rules)/CSR Bulk Carriers  
IACS CSR for Bulk Carriers
- PrimeShip-HULL(Rules)/CSR Tankers  
IACS CSR for Double Hull Oil Tankers

## User friendly interface

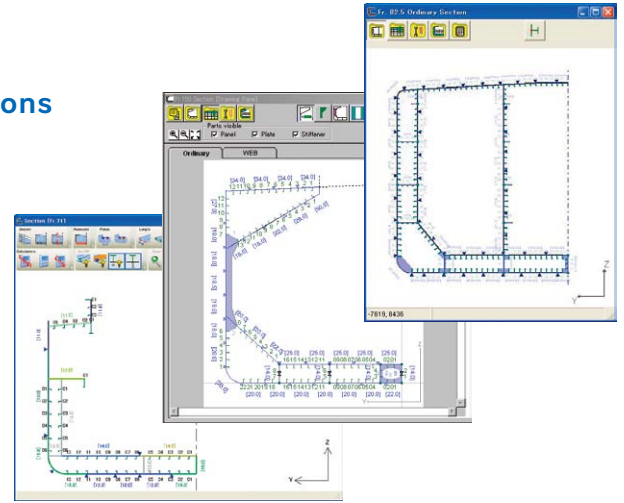
Even users who are unfamiliar with the rules can easily conduct rule calculations using PrimeShip-HULL(Rules).



## Quick and transparent calculations

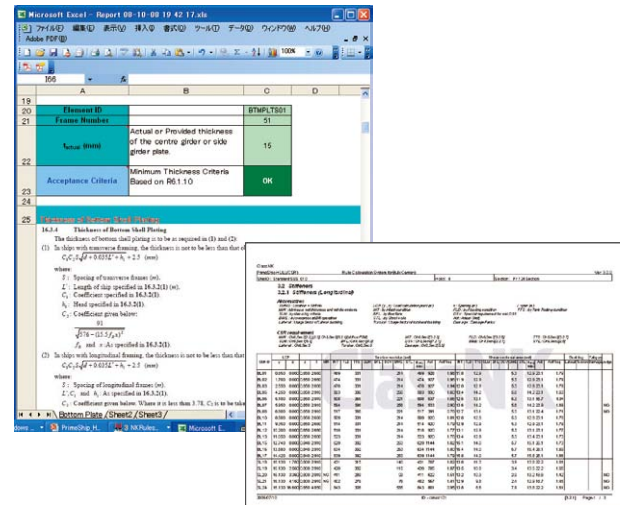
Users can conduct rule calculations not only for the entire cross section of structural members, but also individually for specific members. Users can also quickly and easily assess the scantlings of members.

PrimeShip-HULL(Rules) transparent calculation procedures allows users to check and confirm each step of the calculation process.



## Produce reports in ClassNK required formats

Reports created in PrimeShip-HULL (Rules) are in ClassNK required formats and can be submitted to ClassNK as reference documents for structural drawings, thus greatly increasing the speed of the approval process.

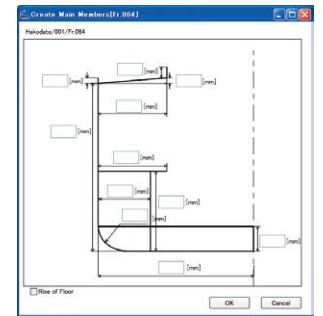


## Free to use

The software is provided free of charge to users who plan to assess structural members of the ship according to the IACS CSR and ClassNK Rules.

## Modifiable input supplement —PrimeShip-HULL(Rules)/NK Rule

Input figures are easy to adjust and modify. Use of actual structural shapes makes inputting data easier for users.



## Optimization function — PrimeShip-HULL(Rules)/NK Rule

PrimeShip-HULL(Rules) makes it easy to check the optimum parameters of selected structural members (e.g. spaces, scantlings).

## User support

### —PrimeShip-HULL(Rules)/CSR Bulk Carriers & Tankers

ClassNK has established a dedicated support desk to answer user questions by e-mail, telephone and fax. In addition, software updates are available on the ClassNK PrimeShip support website.

