

# ETAS

Emergency Technical Assistance Service



## Key Features

- ◆ Computer-based strength & stability analysis for damaged ships.
- ◆ Available at any time- 24 hours a day, 365 days a year.
- ◆ Meets the MARPOL 73/78 Annex 1 “Shore-based Computer Programs” requirement for 5,000+ dwt oil tankers

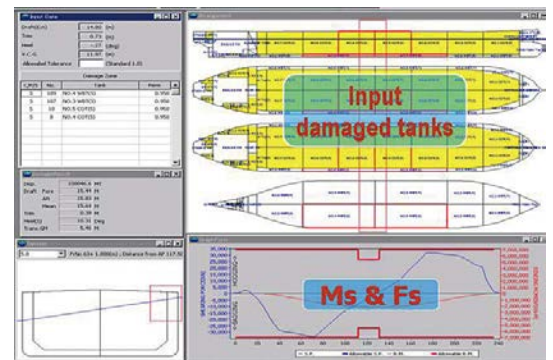
PrimeShip-ETAS is an emergency service designed to help ship owners and operators ensure ship safety and prevent or minimize the effect of marine pollution in the event of a serious ship casualty such as stranding, collision or explosion. Working closely with the owner and salvage team, the ClassNK ETAS team is often the brains behind the brawn, making sure that salvage operations don't make the situation worse, while minimizing environmental impact.



## PrimeShip-ETAS: Emergency Technical Assistance Service

### Damage stability and residual longitudinal strength

Using exclusive software incorporating each individual ship's data, the ClassNK ETAS team can swiftly calculate stability at damage condition and residual longitudinal strength.

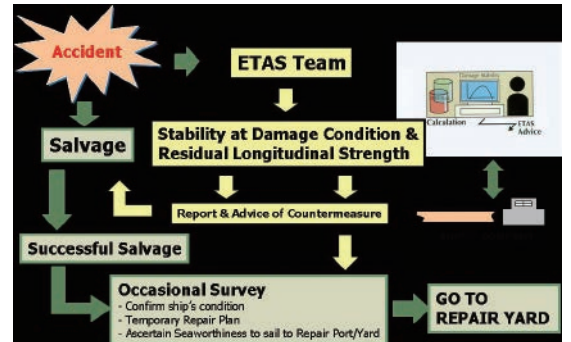


### Quick results and reliable countermeasure advice

Once stability and residual strength calculations are completed, the ETAS team can will report the results to the client, and advise the client of appropriate countermeasures, including the sequence for transferring/ offloading cargo and ballast water for salvage operations. After a successful salvage operation, the ETAS team will provide advice on stability at damage condition and residual longitudinal strength for the voyage to the repairyard.

## 24 hours a day, 365 days a year

A special team composed of highly trained, expert surveyors and naval architects is on call to respond to client emergencies 24 hours a day, 365 days a year.

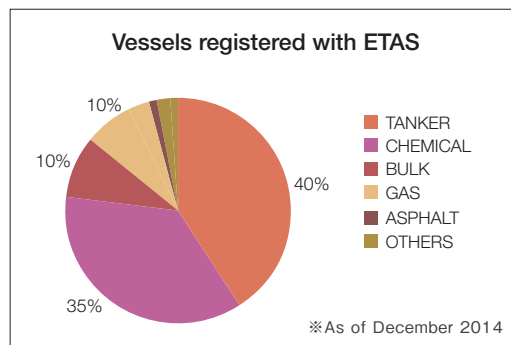


## “Shore-based Computer Programs” requirement of MARPOL 73/38 Annex I

PrimeShip-ETAS complies with the MARPOL 73/78 Annex I shore-based computer programs requirement for oil tankers of 5,000 tons deadweight and above, and the PrimeShip-ETAS address can be used as the contact address for the stability at damage and damage longitudinal strength assessments shown in SOPEP, as required by MARPOL 73/78 Annex I. PrimeShip-ETAS also complies with the OPA 90 vessel response plan requirement for oil tankers entering the territorial waters of the USA.

## Applicable to all types of ships

PrimeShip-ETAS is available for all types of ships, not just oil and chemical tankers. At present, more than 1,200 ships are registered for PrimeShip-ETAS, including bulk carriers, gas carriers, and other vessels.



Contact address : Survey Operations Headquarters/  
Emergency Technical Assistance Service Department  
ClassNK Administration Center Annex

3-3 Kioi-cho, Chiyoda-ku, Tokyo 102-0094, Japan  
E-mail: svd@classnk.or.jp Tel: +81-3-5226-2027 Fax: +81-3-5226-2029