

NAPA Manager

NK-Customized Program for NAPA



Key Features

- ◆ Easy to use - even without training
- ◆ Statutory compliant calculations on 3D models
- ◆ Easy creation of documents for approval

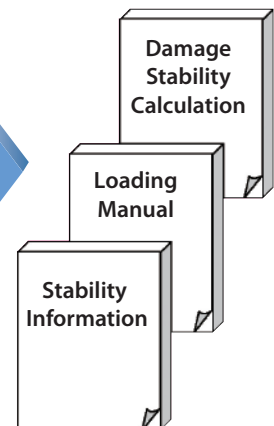
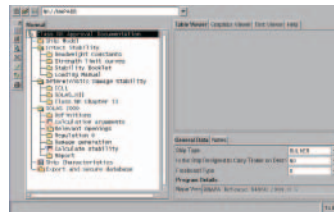
PrimeShip-NAPA Manager, called Statutory Compliance Manager in NAPA systems, is a NAPA-based application tool for carrying out statutory compliance calculations on NAPA 3D models, and can be used to create intact/damage stability booklets and loading manuals.

Overview

3D Model on NAPA Database

Statutory Compliance Manager

Documents for Approval

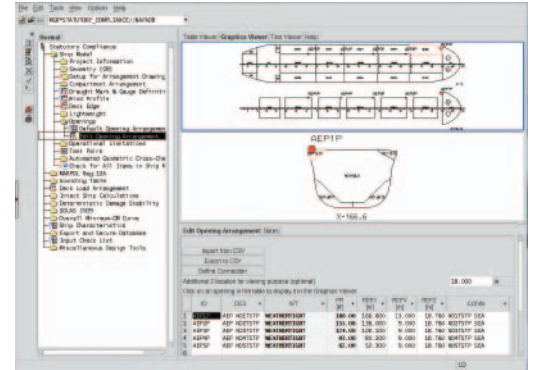
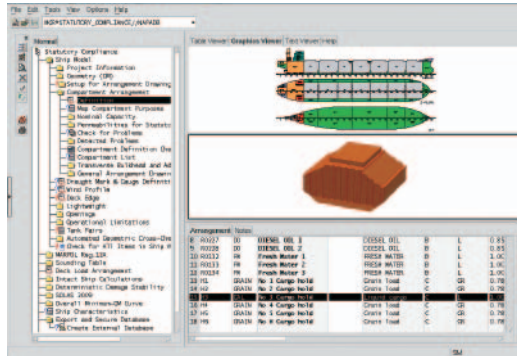




Main Functions

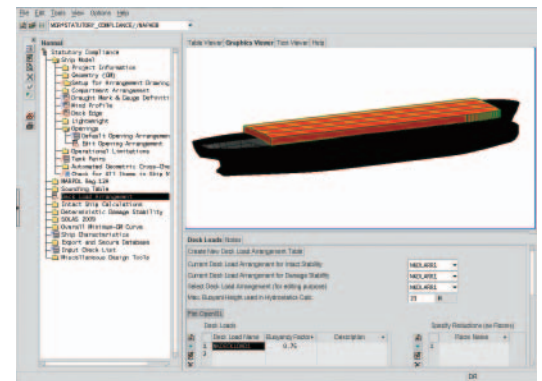
Ship model confirmation

Statutory Compliance Manager will check and confirm the accuracy of the NAPA 3D model, including the hull geometry, compartments and other data, as well as confirm that the model is compatible with Statutory Compliance Manager.



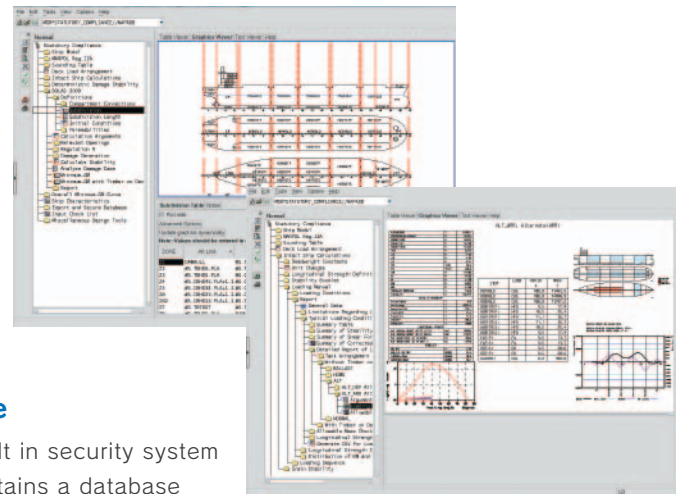
Complete calculation of all elements of ship performance capability

- ◇ Intact Stability Calculation (2008 IS Code) (including timber deck cargo loading)
- ◇ Longitudinal strength calculation (including CSR-based calculation)
- ◇ Deterministic Damage Stability Calculation
- ◇ Probabilistic Damage Stability Calculation (including timber deck cargo loading)



Creation of final calculation booklet

- ◇ Stability Information for the master
- ◇ Loading Manual
- ◇ Damage Stability Calculation
- ◇ Grain Loading Manual



Secure exportable database

Statutory Compliance Manager's built in security system ensures that even if a third-party obtains a database exported from the software, they will be unable to access the information contained within.

System Requirements

Statutory Compliance Manager requires a properly installed and licensed copy of the NAPA software program.

Contact address :
Hull Department
ClassNK Administration Center Annex
3-3 Kioi-cho, Chiyoda-ku, Tokyo 102-0094, Japan
E-mail: hld@classnk.or.jp
Tel: +81-3-5226-2018 Fax: +81-3-5226-2019

NAPA Customer Service
HTC, Tammasaarenkatu 3,
FI-00180 Helsinki, Finland
E-mail: customer.service@napa.fi
Tel: +358-9-22-813-888
Fax: +358-9-22-813-800