

Subject

Annex IV of MARPOL 73/78 for existing Japanese-registered ships

ClassNK

Technical Information

No. TEC-0700
Date 8 June 2007

To whom it may concern

Please be informed of surveys relating to MARPOL annex IV and ISPP certificate issued by Japanese Government for existing Japanese-registered ships as follows.

Surveys relating to MARPOL Annex IV for existing Japanese-registered ships before the effective date (27 September 2008) can be carried out, and the documents which are required to be submitted to Japanese Government for obtaining ISPP certificate should be issued by ClassNK after the completion of the initial survey. It is required to complete the plan approval at ClassNK Machinery Department and carry out the initial survey in order to obtain the documents.

However, the plan approval may be omitted in case where the ship has the Statement of Compliance (SOC). As for the details, please refer to the below 3.

1. Plan approval at ClassNK Machinery Department

Three sets of following documents are necessary to be submitted to ClassNK Machinery Department for approval.

- (i) Plans, documents and particulars relevant to the sewage treatment plant (including total capacity, manufacturer/type and a copy of type approval certificates by the Administration, calculation sheet of sewage holding tanks)
- (ii) Sewage piping diagrams (including sewage piping diagrams in all places such as accommodation spaces and engine room, the standard shore connection, valves and their materials)

2. Initial survey at service sites

Please send "Application for Surveys and Issue of Certificate (Form 2A)" to a ClassNK service site upon ticking in the box of "Initial" of "Marine Pollution Prevention Installation [MARPOL IV]" in "1. (2) Survey for maintenance of Installation Registration" and ticking in the left box of "SPP certificate" in "3. Certificate to be issued". It is required to complete the plan approval of the above 1. when the application is sent to a service site.

In case where a sewage treatment plant is installed onboard, relative surveys are categorized as shown in fig.1, and surveys which should be carried out at the initial survey depend on the category. Preparations by the applicant before the initial survey may be necessary for some of the surveys shown in table.1.

(To be continued)

NOTES:

- ClassNK Technical Information is provided only for the purpose of supplying current information to its readers.
- ClassNK, its officers, employees and agents or sub-contractors do not warrant the accuracy of the information contained herein and are not liable for any loss, damage or expense sustained whatsoever by any person caused by use of or reliance on this information.
- Back numbers are available on ClassNK Internet Homepage (URL: www.classnk.or.jp).

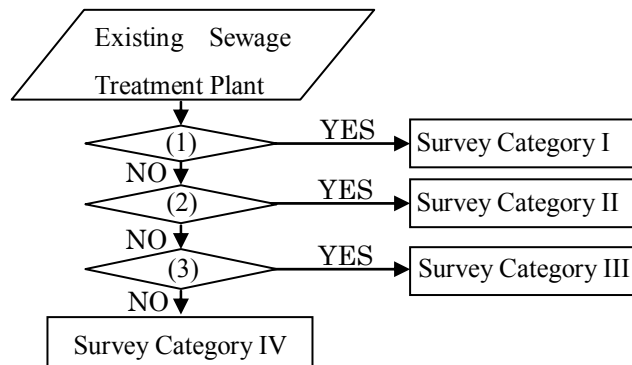


Fig. 1 Flow-chart for survey categories

- (1): Above the installed sewage treatment plant is SBT-type manufactured by TAIKO KIKAI INDUSTRIES CO., LTD. or TF-type by GOKO SEISAKUSHO CO., Ltd., and it has chop marks by inspectors from HK^{*1}.
- (2): The installed sewage treatment plant is SBT-type manufactured by TAIKO KIKAI INDUSTRIES CO., LTD. or TF-type by GOKO SEISAKUSHO CO., Ltd., but it does not have chop marks by inspectors from HK.
- (3): The installed sewage treatment plant is type-approved by the Administration except Japanese Government.
- *1: “it has chop marks by inspectors from HK” means the installed sewage treatment plant was certified by HK before the delivery from the manufacturer.

Table 1 Required surveys of sewage treatment plants

[o] in each column means survey required.

Survey items	Survey Category I	Survey Category II	Survey Category III	Survey Category IV
Confirmation of a document issued by the manufacturer which specifies the sewage treatment plants type-approved by the Administration and the installed one are the same type ^{*2}		o	o	
Confirmation of records of the type approval tests ^{*3}			o	
Hydraulic pressure test at pressure corresponding to a water head of 2.5m above the top plate in case that the casing of the plants is not pressurized, or at pressure of 1.5 times the normal operational pressure in case that it is pressurized. ^{*4}		o	o	o
Function tests	o	o	o	o
Tests based on the standards for type approval developed by Japanese Government				o

(to be continued)

*2: It is necessary to request the manufacturer to issue a document which specifies the installed sewage treatment plant is the same type which was type-approved by the Administration. Whether the document is required or not, and the manufacturers' contact number are shown in table 2.

Table 2 Document issued by the manufacturer

Manufacturer	Type	The document by the manufacturer
TAIKO KIKAI INDUSTRIES CO., LTD TEL: 0820-52-3114 FAX: 0820-53-1001	SBT-Type (with chop marks by HK)	Not required
	SBT-Type (without chop marks by HK)	Required
	BFT-Type	Required
GOKO SEISAKUSHO CO., Ltd. TEL: 03-5731-9634 FAX: 03-5729-3891	TF-Type (with chop marks by HK)	Not required
	TF-Type (without chop marks by HK)	Required
SASAKURA ENGINEERING CO., LTD. TEL: 06-6473-2134 FAX: 06-6473-5540	ST-Type, SD-Type	Required

*3: It is confirmed that Biochemical Oxygen Demand is less than 50 mg/l, Suspended Solid is less than 50 mg/l, and Faecal Coliform Count is less than 250/100ml referring to the result of the type approval tests. It is not necessary to confirm them at the initial survey for ST-type, SD-type manufactured by SASAKURA ENGINEERING CO., LTD. and BFT-type, AP-type by TAIKO KIKAI INDUSTRIES CO., LTD. since they have been confirmed by ClassNK Machinery Department.

*4: The submission of the test records may substitute the attendance test.

3. Procedures to obtain ISPP certificate when the ship has the Statement of Compliance (SOC)

Please apply for the initial survey to service sites as the above 2. without the plan approval shown in the above 1. in case that no "Note" is specified in the SOC. On the other hand, please follow the below instruction in case that "Note" is specified in the SOC because the procedure depends on the "Note".

- (i) In case that the SOC has only a "Note" which requires the installed sewage treatment plant complies with the Approval Test Standards of the Japanese Government, please apply for the initial survey to ClassNK service sites as the above 2. without the plan approval shown in the above 1.

(To be continued)

- (ii) In case that a different “Note” from the above (i), or several “Notes” in addition to the above (i) are specified in the SOC, plan approval shown in the above 1. is required prior to the initial survey.

For any questions about the above, please contact:

NIPPON KAIJI KYOKAI (ClassNK)
Machinery Department, Administration Center, Head Office
Address: 4-7 Kioi-cho, Chiyoda-ku, Tokyo 102-8567, Japan
Tel.: +81-3-5226-2022 / 2023
Fax: +81-3-5226-2024
E-mail: mcd@classnk.or.jp