

# SC 126 Fire Protection Materials for Cargo Ships

(SOLAS regulations II-2/4.4.4, 5.3, 6.2.1 and 6.3.1)

(May 1998)  
 (Rev.1  
 June 2000)  
 (Rev.2  
 Nov 2005)  
 (Corr.1  
 Aug 2021)

For the application of SOLAS regulations II-2/4.4.4, 5.3, 6.2.1 and 6.3.1, reference is to be made to the attached Figure 1 and associated Tables 1 and 2.

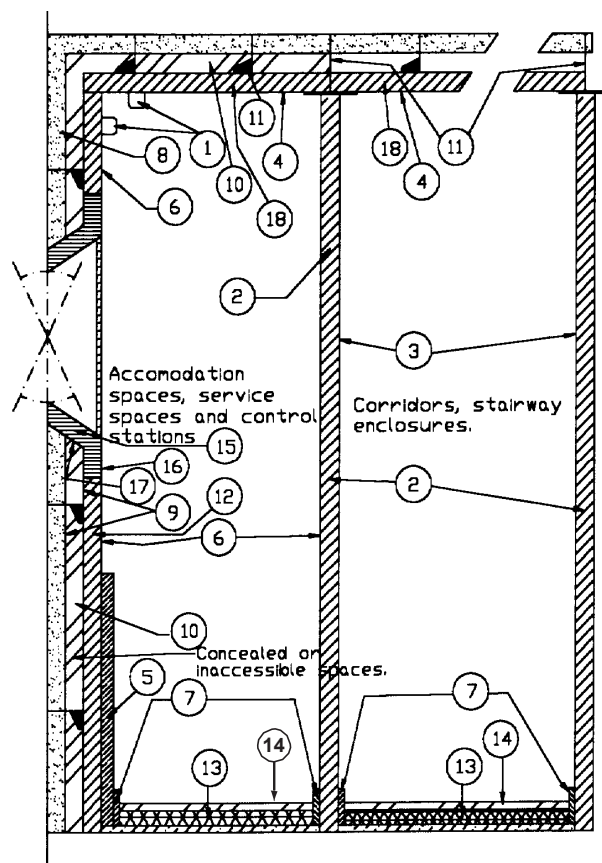


Figure 1: Constructural elements in accommodation spaces

Note:

1. This Unified Interpretation is to be applied by all Members and Associates on ships contracted for construction on or after 1 January 2006.
2. The "contracted for construction" date means the date on which the contract to build the vessel is signed between the prospective owner and the shipbuilder. For further details regarding the date of "contract for construction", refer to IACS Procedural Requirement (PR) No. 29."

Table 1: Method IC

**SC  
126**  
(cont)

		Requirements for components						
		A	B	C	D	E	F	G
		Non Combustible Material Reg. II-2/5.3.1.2.2.1	Non Combustible Material Reg. II-2/5.3.1.1	Low Flame Spread Reg. II-2/5.3.2.4.2	Equivalent Volume Reg. II-2/5.3.2.3.1	Calorific Value Reg. II-2/5.3.2.2	Smoke Production Reg. II-2/6	Not readily ignite Reg. II-2/4.4.4
1	Moulding				X			
2	Panel	X						
3	Painted surfaces or Veneer or Fabric or Foils			X	X	X	X (2)	
4	Painted surfaces or Veneer or Fabric or Foils			X	X	X	X (2)	
5	Decoration				X		X	
6	Painted surfaces or Veneer or Fabric or Foils				X	X	X (2)	
7	Skirting board				X			
8	Insulation		X (1)					
9	Surfaces and paints in concealed or inaccessible spaces			X				
10	Draught stops	X						
11	Grounds and supports	X		X				
12	Lining	X						
13	Primary deck covering 1 <sup>st</sup> layer						X (4)	X
14	Floor finishing			X (3)			X	
15	Window box	X						
16	Window box surface			X	X	X	X	
17	Window box surface in concealed or inaccessible spaces			X				
18	Ceiling panel	X						

- (1) Vapour barriers used on pipes for cold systems (see UI SC 102) may be of combustible materials providing that their surface has low flame spread characteristics (Reg. II-2/5.3.1.1)
- (2) Applicable to paints, varnishes and other finishes (Reg. II-2/6.2.1)
- (3) Only in corridors and stairway enclosures.
- (4) Only in accommodation and service spaces and control stations (Reg. II-2/6.3.1).
- Regulation II-2/6.2 only applies to accommodation spaces, service spaces and control stations as well as stairway enclosures (UI SC 127)
- As far as window boxes construction is concerned, reference is also to be made to MSC/Circ.917 and MSC/Circ. 917 Add. 1

Table 2: Methods IIC and IIIC

		Requirements for components						
		A	B	C	D	E	F	G
		Non Combustible Material Reg. II-2/5.3.1.2.2.2	Non Combustible Material Reg. II-2/5.3.1.1.1	Low Flame Spread Reg. II-2/5.3.2.4.2	Equivalent Volume Reg. II-2/5.3.2.3.1	Calorific Value Reg. II-2/5.3.2.2	Smoke Production Reg. II-2/6	Not readily ignite Reg. II-2/4.4.4
1	Moulding				X (3)			
2	Panel	X (4)						
3	Painted surfaces or Veneer or Fabric or Foils			X	X	X	X (5)	
4	Painted surfaces or Veneer or Fabric or Foils			X	X (3)	X (2)	X (5)	
5	Decoration				X (3)		X	
6	Painted surfaces or Veneer or Fabric or Foils				X (3)	X (2)	X (5)	
7	Skirting board				X (3)			
8	Insulation		X (1)					
9	Surfaces and paints in concealed or inaccessible spaces			X				
10	Draught stops	X (4)						
11	Grounds and supports	X (4)		X				
12	Lining	X (4)						
13	Primary deck covering 1 <sup>st</sup> layer						X (7)	X
14	Floor finishing			X (6)			X	
15	Window box	X (4)						
16	Window box surface			X (3)	X (3)	X (2)	X	
17	Window box surface in concealed or inaccessible spaces			X				
18	Ceiling panel	X (4)						

- (1) Vapour barriers used on pipes for cold systems (see UI SC 102) may be of combustible materials providing that their surface has low flame spread characteristics (Reg. II-2/5.3.1.1)
- (2) Where fire material is fitted on non combustible bulkheads, ceiling and lining in accommodation and service spaces (Reg. II-2/5.3.2.2)
- (3) To be applied to those accommodation and service spaces bounded by non combustible bulkheads, ceiling and lining (Reg. II-2/ 5.3.2.3.1)
- (4) Only in corridor and stairway enclosures serving accommodation and service spaces and control stations (Reg. II-2/5.3.1.2.2.2).
- (5) Applicable to paints, varnishes and other finishes (Reg. II-2/6.2.1)
- (6) Only in corridors and stairway enclosures.
- (7) Only in accommodation and service spaces and control stations (Reg. II-2/6.3.1)

- Regulation II-2/6.2 only applies to accommodation spaces, service spaces and control stations as well as stairway enclosures (UI SC 127)
- As far as window boxes construction is concerned, reference is also to be made to MSC/Circ.917 and MSC/Circ. 917 Add. 1

End of Document
-----------------